



EASY TRANSIT
– The easy way to Fireseal

THE EASY WAY TO FIRESEAL

It started with one of the most safety-critical jobs imaginable: An assignment from the Swedish Government to develop a system for fire sealing at Sweden's nuclear power plants. Today, our fire sealing system has been protecting lives and property for more than 40 years wherever fires must never be allowed to spread, such as offshore platforms, FPSOs, cruise and passenger vessels, oil tankers as well as navy vessels and container ships. And it has approvals for all of the most common deck and bulkhead applications.

Our system has become a favorite of installers and buyers because of our dedication to making it easy to work with and easy to make safe installations. And when it doesn't take long to do it right, it is also cost effective. That's why FireSeal has an impressive reference list from some of the world's largest shipyards.

Learn more about what the easy way to fireseal can do for safety on vessels, for your comfort on the job, and for long-term cost effectiveness.

TESTS AND CERTIFICATES

Fire tests for installation in A0-A60 class in bulkhead and deck have been carried out according to IMO 2010 FTP Code. Certificates will be available from ABS, US Coast Guard, European MED-B & Lloyds.

To ensure the long-term survival of the structure, a vibration test has been carried out in accordance with the marine type approval standard IACS E10 and IEC 60068-2-6:2007.

Tests have been carried out at accredited third party testing laboratory.



INSTALL FROM ONE SIDE



By installing from one side only the installation process is simplified, saving time and effort. This is particularly beneficial in tight or restricted spaces where accessing multiple sides may be challenging or impossible. In addition, it provides unprecedented opportunities to run cable in tight bends as Easy Transit does not extend from the bulkhead or deck.



FAST INSTALLATION

FireSeal understands the importance of fire protection and has engineered a new innovative fire sealing system that is efficient and does not compromise on quality. The design and streamlined installation techniques will save valuable time and labor cost. Installation time of the Easy Transit system is on average less than 4 minutes!



FILLING RATIO: EMPTY TO FULL

Easy Transit (ET) utilizes the full penetration and gives the possibility of high space efficiently. Approved to use empty or full of cables in bundles up to $\varnothing 160$ mm. When dealing with high cable loads, it is essential to consider methods that require fewer penetrations while maintaining cost efficiency. Cable fill area up to 201cm^2 for ET160 & 64cm^2 for ET80.

Max. cable size for ET160 is $\varnothing 77\text{mm}$ & for ET80 is it $\varnothing 50\text{mm}$.



160mm
6,3in

160mm
6,3in



80mm
3,2in

80mm
3,2in

RETROFIT

Easy Transit's openable wrap makes it easy to add or remove cables on demand without any spare parts needed. The benefit of retrofitting without any spare parts is that it can be performed anywhere and anytime without preparations. Ultimately, a maintenance-free system optimizes cost efficiency, productivity, and operational continuity.



LOW WEIGHT

Easy Transit is extremely light, more than eight times lighter than comparable systems, based on weight compared to the product's practical volume of cable. By using Easy Transit you save a lot of weight, which reduces the total weight of the vessel.

Feel free to compare with other systems.

Art. no.	Description	Weight
100947	EASY TRANSIT 80	0,61kg / 1,34lb
100948	EASY TRANSIT 160	1,56kg / 3,44lb



INSTALLATION WITH SELF-TAPPING SCREWS

Easy Transit is tested and approved for installation using various methods, including self-tapping screws, bolting, or spot welding. The installation process does not require extensive preparation or specialized equipment, offering flexibility to suit different needs. For example, self-tapping screws provide a quick and efficient installation method, while bolting or spot welding can be utilized depending on structural or operational preferences.



(for welding, our recommendation is to use FireSeal welding lugs)

SIDE BY SIDE INSTALLATION



Easy Transit is approved for high cable quantity demand through side by side installation in both deck and bulkhead (2 x Ø160mm). This makes Easy Transit very useful for all above waterline applications.

ONE BOX ALL INCLUDED



Easy Transit is a complete cable transit that comes packed in a box and it does not require any sealant whatsoever. Hence, it has no expiration date making it a perfect solution for stock keeping in a shipyard/warehouse or on the vessel for ad-hoc installations.

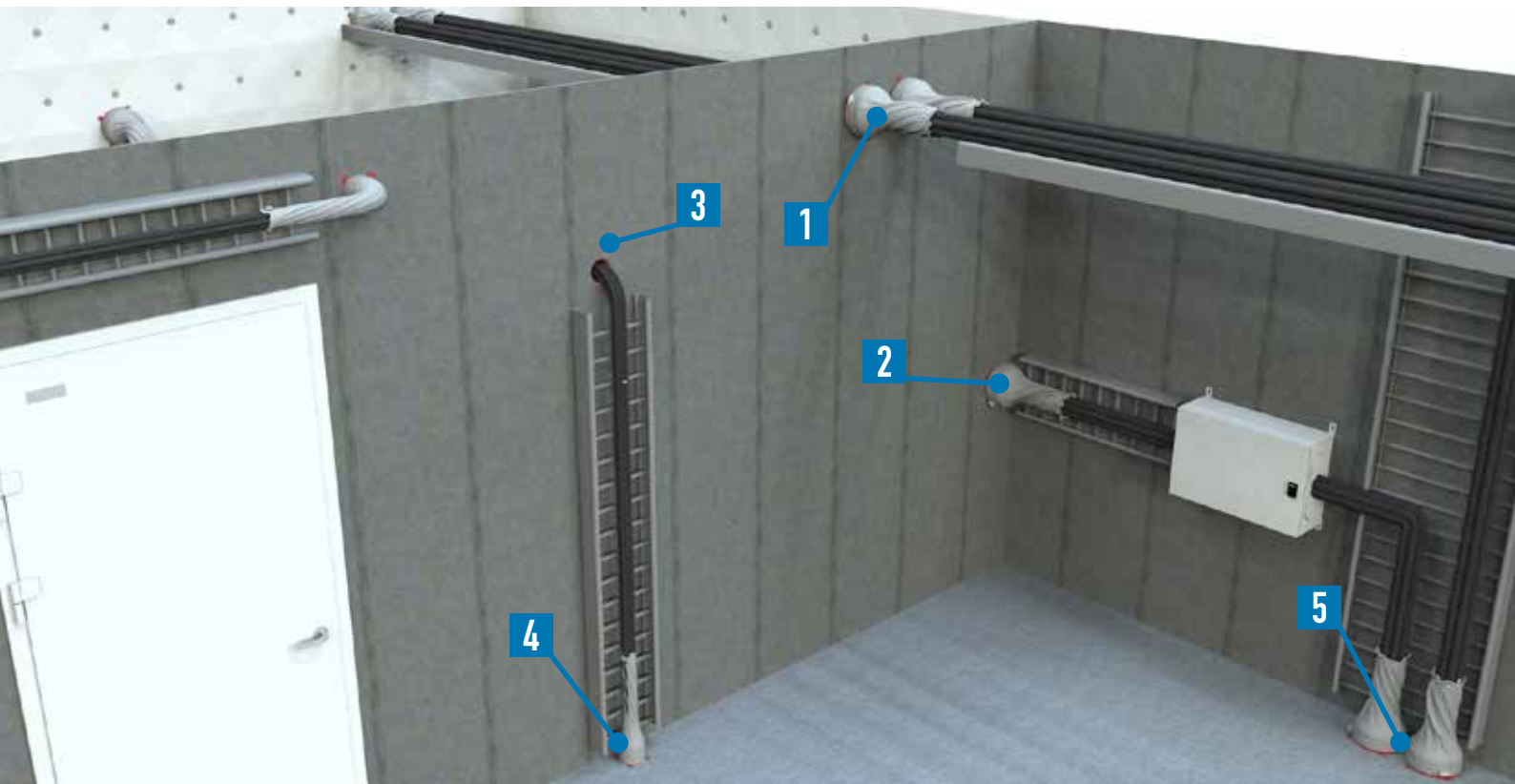
Art. no.	Description	Dimension
100947	EASY TRANSIT 80	80mm / 3,2in
100948	EASY TRANSIT 160	160mm / 6,3in

INSTALLATION AFTER THE CABLES HAVE BEEN PULLED



The ability to carry out installation work after the cables have been pulled enhances efficiency, reduces potential disruptions, and streamlines the entire installation process. This method offers flexibility and convenience, while maintaining the integrity of the cable infrastructure.

DIFFERENT PENETRATION ONE APPLICATION



Generally, Easy Transit has a cable filling degree of 0-100%, which means it can be filled visually full. The installation can be done on both sides of the bulkhead, making the installation easy and accessible.

1 Easy Transit 160 (side by side)

Approved to be installed side by side.
Advantage when a lot of cable is passing through the bulkhead, cable fill area up to 402cm².
Max. cable size is Ø77mm.

2 Easy Transit 160

Single installation.
Cable fill area up to 201cm².
Max. cable size is Ø77mm.

3 Easy Transit 80

Tight bends provides unprecedented opportunities to run cable tight to the bulkhead. Easy Transit does not extend from the bulkhead or deck on the opposite side, as it's a one side installation.
Cable fill area up to 64cm².
Max. cable size is Ø50mm.

4 Easy Transit 80

Perfect use of lower cable load passing through the bulkhead.
Cable fill area up to 64cm².
Max. cable size is Ø50mm.

5 Easy Transit 160 (side by side)

Approved to be installed side by side or single.
Advantage for higher cable load passing through the deck, cable fill area up to 402cm².
Max. cable size is Ø77mm.

KEEP IN MIND THAT...



The fireproof wrap should be rotated counter-clockwise around the cables to create a smoke-proof installation. The more cables that are pulled through the penetration, the closer the cable tie is to the bulkhead. The protrusion of the wrap on the cable varies between 100-300mm depending on the amount of cable in the penetration.



The supplied self-drilling/tapping screw can be used up to 12mm / 1/2 inch thick steel plate. For best drilling results a tight 8mm Hex socket should be used. The screw must not wobble as it reduces the drilling performance. Attention, max 1500rpm, as well as a high working pressure on the screwdriver is recommended.



The graphite collar on the Easy Transit is equipped with a durable and strong, yet easy-to-use metal lock. This is to ensure that the collar does not open due to vibrations or in the event of a fire. The entire Easy Transit installation is vibration tested in accordance with IACS standards.



The metal cable tie has a practical quick release function that makes it easy to preload by hand and then tighten with a screwdriver. It is possible to use both a Hex 8mm socket, or a Ph2 screw bit. The cable tie can be easily released and re-installed for retrofit installations.



The Blanket insulation that are left over after sealing the voids between the cables and the wrap, can be saved for future retrofit needs. Insert the remaining piece of Blanket into the Easy Transit wrap from the exposed backside.



When taping the wrap to the graphite collar, it is easiest to start taping just to the left of the graphite collar's metal lock. By doing so you avoid getting the metal lock in the way of the metal cable tie's lock when it is to be tightened later.



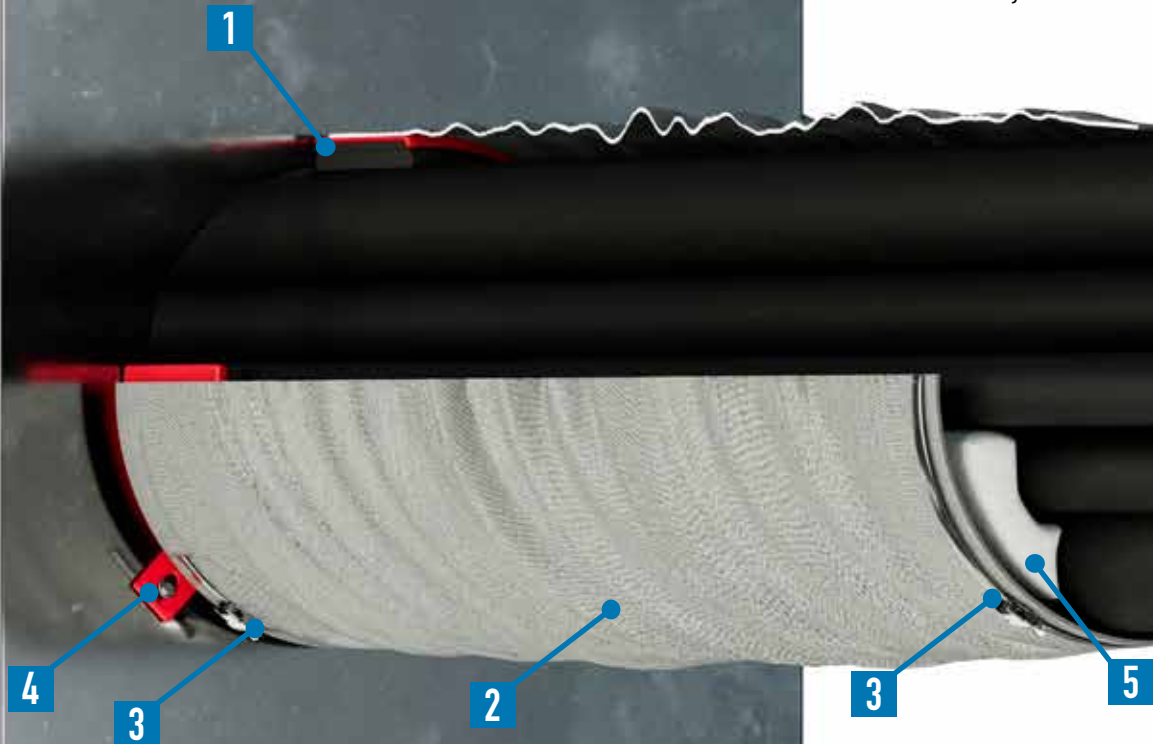
fireseal.com/contact/

Your feedback is important to us

Easy Transit is developed, patented, tested and produced in Sweden by FireSeal AB. Our business idea is to deliver products that are easy to use, but at the same time fulfill all high demands on safety at sea. We are therefore grateful for all comments from customers and do our best to meet the requests that come to us. Please do not hesitate to contact our representative with your comments. You can find the right person to contact by photographing the QR code on the left, or visit: fireseal.com/contact/

PREPARATIONS

Before installing the Easy Transit, holes should be made in the bulkhead or deck. This can be done with a hole saw, plasma cutter or other equipment. The edges of the hole should not be sharp. For hole sizes see Technical Properties. Cables can be pulled before or after Easy Transit is installed.



MATERIAL

Easy Transit consists of a number of components. An openable steel collar with a vibration resistant locking mechanism. The collar is filled with an intumescent graphite compound in two layers. A fire and heat resistant wrap is placed around the collar, which is fixed both around the collar and the cables with two adjustable quick release cable clamps. Any voids between cables and wrap are filled with Marine Blanket, which is a ceramic wool. Fixation to the deck and bulkhead is done with self-drilling/threading screws. Welding is also possible together with FireSeal welding lugs.

TECHNICAL INFORMATION

TECHNICAL PROPERTIES

1 Graphite Collar

Material collar	Galvanized Steel
Material graphite	Intumescent graphite
Activation temperature	120-150°C
Color	Red
Max hole size ET80*	Ø 90mm
Max hole size ET160*	Ø 185mm

2 Wrap

Installation length over cable	100-300mm
Working temperature	Up to 1000°C -1h

3 Cable tie

Socket size	Hex 7mm/Ph2
Material	Stainless Steel
Max. tightening torque	5Nm
Size for ET80	450x9mm
Size for ET160	750x9mm

4 Screw

Dimension	5,5x35mm
Socket size	Hex 8mm
Number of screws installed	4pcs
Material	
Max. screw speed	1500r/min
Max. drilling capacity	12mm
Max. tightening torque	12Nm

5 Marine Blanket

Material	Calcium silicate
Colour	White
Density	96kg/m³
Classification Temperature	1050°C

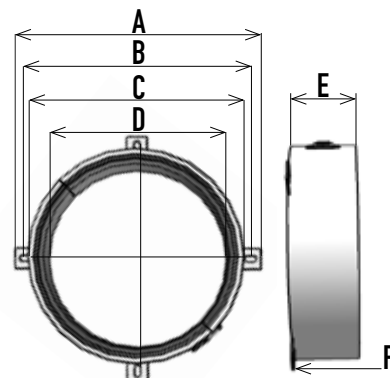


* Maximum aperture is based on the fire properties. A smaller aperture is possible, but consider no direct contact towards sharp metal edges. Fire-Seals recommended aperture size is, ET80 - 85-90mm, ET160 - 175-185mm.

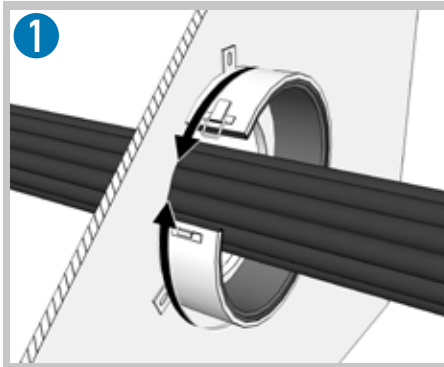
Graphite collar	A (mm)	B (mm)	C (mm)	D (mm)	E (mm)	F (mm)	Intumescent material (mm)
Easy Transit 80	147	123	99	82	52	1	6
Easy Transit 160	233	209	185	160	62	1	18

Wrap

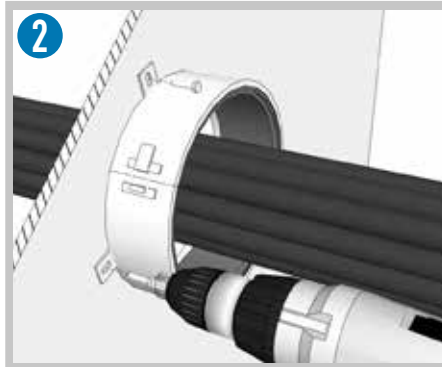
The protrusion of the wrap can be 100 – 300mm



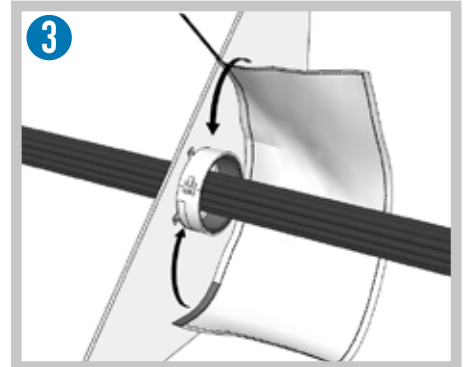
INSTALLATION INSTRUCTIONS



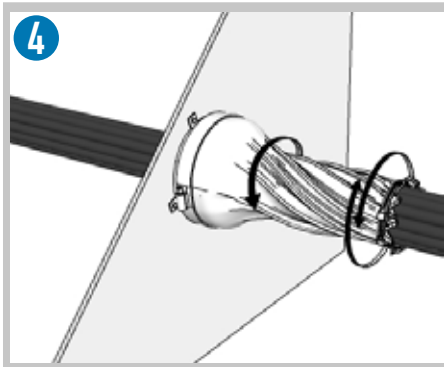
1 Place the graphite collar over the cables and lock it.



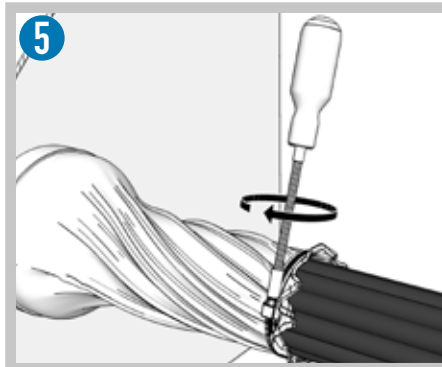
2 Fasten the graphite collar to the bulkhead or deck with the enclosed self-taping screws. To be installed on one side only.



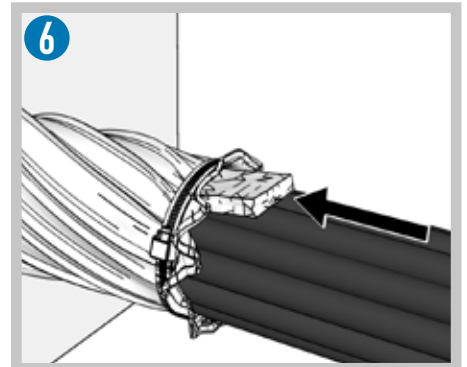
3 Take the openable wrap, remove the film from the tape and place it on the collar. Secure the wrap with the supplied cable tie.



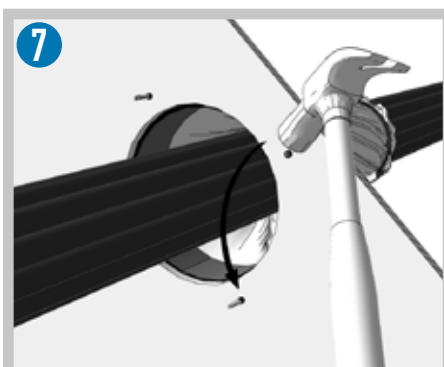
4 Twist the end of the fireproof wrap counterclockwise to create a smoketight penetration.



5 Secure the fireproof wrap with the supplied cable tie. Use a Hex 7mm/Ph2 screwdriver.



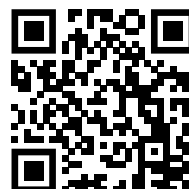
6 Fill any gaps between cables and/or cable and the wrap with enclosed Marine Blanket. The spare Marine Blanket is placed inside the wrap.



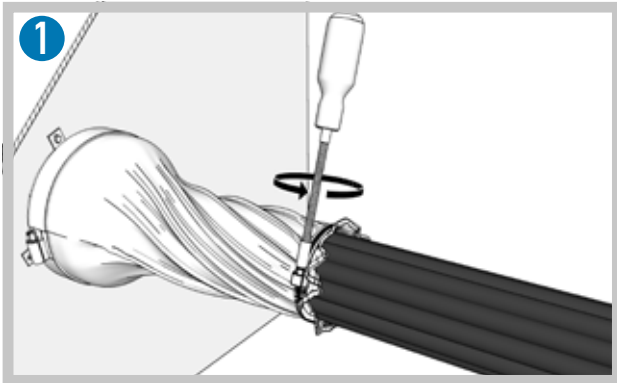
7 To avoid cut hazard, it is optional to remove the drilling tip by using pliers, hammer or a pipe with an inner diameter of Ø6mm.

INSTALLATION MOVIE

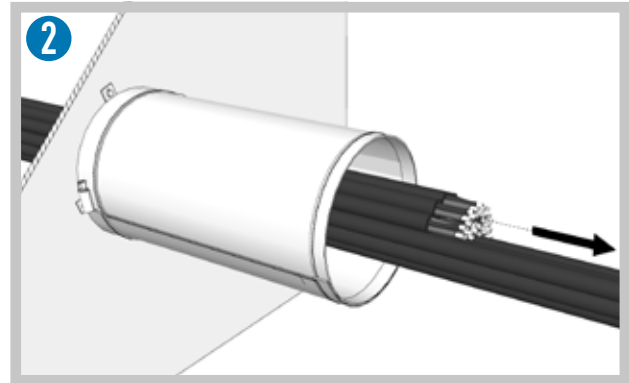
Read the QR code with your phone's camera or visit
<https://fireseal.com/easytransit3dfilm/>



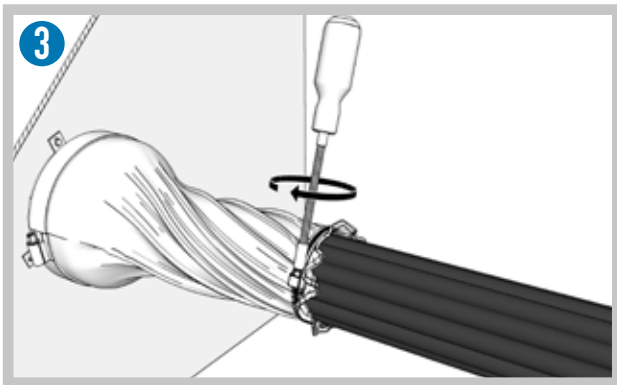
RETROFIT INSTALLATION - add or remove cables



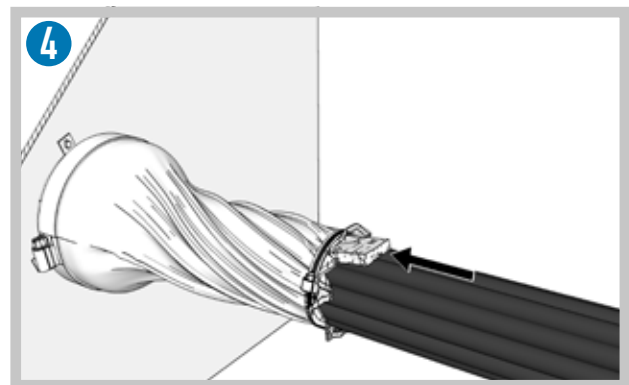
Remove or loose the cable tie holding the cables.



Add or remove the cables.



Secure the cable tie over the cables.



Fill any gaps between cables and/or cable and the wrap with enclosed Marine Blanket. The spare Marine Blanket is placed inside the wrap.

Note!

Easy Transit's design and technical innovation is patented. Any possible copying, both of details and function, will be prosecuted in court of law after the patent has become legal. Easy Transit is an innovation owned by FireSeal AB. The scope of the patent is large and will cover Europe, Asia and North America, as well as South America.





FireSeal AB
Esbogatan 14
SE-164 74 KISTA
SWEDEN
+46(0) 8 623 6160
info@fireseal.se
www.fireseal.com

FireSeal Inc
1200 Brickell Ave. Suite 800
Miami, FL 33131
United States
+1 305 807 8118
per.lind@fireseal.com
www.fireseal.com

FireSeal China
Bergman & Beving
Suite 1606-1607, Xiandai Building, No.218
South Xiangyang Road, Shanghai, PRC
+86(0) 1851 6093 598
andy.chen@fireseal.com
www.fireseal.com



The fireseal system originally developed to safeguard nuclear power plants

