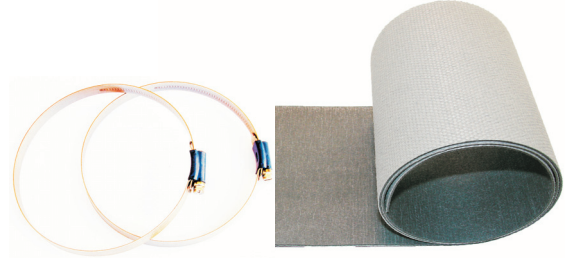


Marine Wrap

Plastic Pipe Seal



GENERAL

Marine Wrap is a graphite intumescent wrapping material applied around plastic pipes that penetrate "fire cells", rooms or areas that are classified as A0-A60. The intumescent material expands when affected by fire and crunches the plastic pipe hence, sealing any gaps and preventing the spread of flame, smoke or gases into the protected cell. Marine Wrap is designed for single or multiple pipes in the same opening.

FUNCTION

When Marine Wrap is affected by heat/fire the intumescent material starts to react at temperatures of 120-150 °C (248-302°F). The material expands up-to 8 times its installation size, exerts a pressure up-to 5 bar and effectively seals the gap between the pipe and the barrier it penetrates. As heat increases, the surface layer of the intumescent material forms a fire-resistant char preventing the passage of flame, smoke and gases.

INSTALLATION

Marine Wrap is manufactured in various lengths to be adapted for different plastic pipe dimensions. Marine Wrap has the same width (150 mm) for all sizes of plastic pipe. Marine Wrap is applied around the plastic tube and fastened with 2 hose clamps one each side of the separating bulkhead/deck.

To safe-guard against the passage of cold smoke or gas, the joint between the pipe and graphite is sealed with Marine Flex.

ADVANTAGES

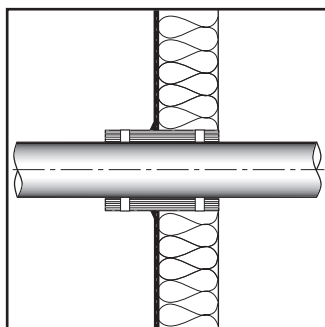
- Easy and quick installation.
- Maintenance free.
- Withstands severe weather conditions.
- Suitable for most sizes of plastic pipes and for multiple pipes in the same opening.
- Widely approved.
- Very cost effective solution.

TECHNICAL SERVICE

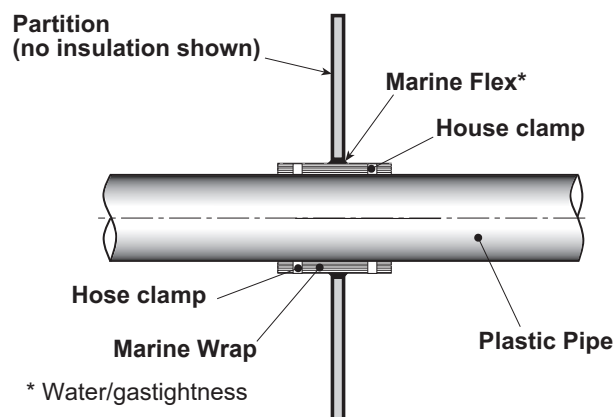
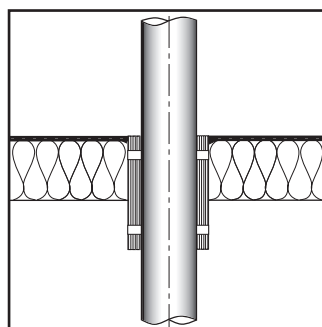
Contact FireSeal for technical service or other assistance.

FS-PP1912-01
Date: 2019-12-01

Bulkhead Penetration



Deck Penetration



Marine Wrap Type	Measures in mm				
	Pipe O.D.	Width	Length	Layers	Lining THK
50	≤ 50	150	370	2	1,5/layer
75	51 ≤ 75	150	530	2	1,5/layer
110	76 ≤ 110	150	1150	3	1,5/layer
160	111 ≤ 160	150	2750	5	1,5/layer

2 psc. Hose clamps (12x0,7 mm) for each Marine Wrap.

TECHNICAL DATA

Fire rating: A0 - A60

Sizes:.....10-160 mm

Intumescent material:Graphite base

Activating temperature:120-150 °C

Storage/Shelf life:Unlimited if stored dry

ORDERING

When ordering, please specify:

- No. and type of Marine Flex
- No. of Marine Flex sealant in 310 ml cartridges
- No. of Hose clamps

Marine Flex sealant consumption:

Approx. 20 ml sealant per running meter of bead measuring 6 x 6 mm. Additional sealant may be needed if the pipe O.D. is substantially smaller than the Marine Wrap O.D.

INSTALLATION DIRECTIVES

1. Determine size of plastic pipe.
2. Wrap the graphite material around the plastic pipe and push it to the right level.
3. Screw the hose clamps around the graphite material on each side of the bulkhead and both house clamps under deck.
4. Seal the joint between graphite and partition with Marine Flex sealant.