

RETROFIT GUIDE, WHEN ADDING OR REMOVING CABLES OR PIPES

MARINE FLEX SYSTEM



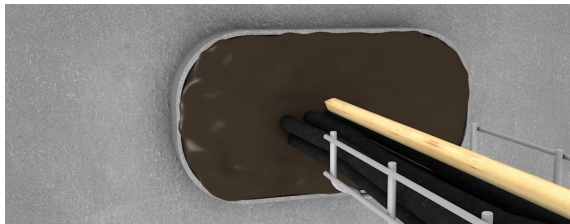
ABS Certificate 21-2081763-1-PDA
Issue Date: 10 February 2022
Expiry Date: 11 March 2026



This is a step by step installation guide developed to ensure that maintenance and repair are carried out correctly when adding or removing cables & pipes. (Adding step 1,0. Removing step 2,0)

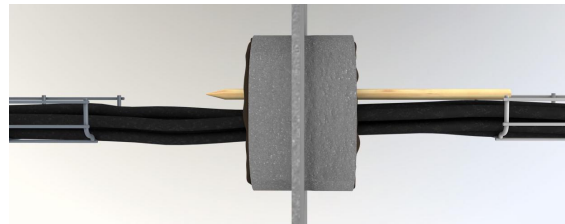
ADDING CABLE OR PIPE

STEP 1,0



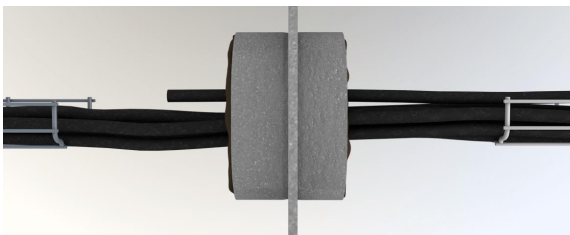
- Distribute the cables / pipes evenly and keep in mind to make room for future new cables / pipes.
- Distance between cable and sleeve must always be minimum 5mm (0,2").
- Distance between pipe and sleeve must always be minimum 10mm (0,4").
- For watertight installations, cables must be separated with minimum 5mm (0,2") of Marine Blanket.

STEP 1,1



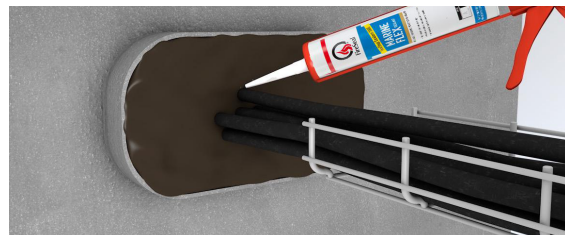
- Penetrate the first layer of Marine Flex sealant, the Marine Blanket and the second layer of Marine Flex Sealant
- Use a pointed stick of wood in the appropriate thickness.
- The hole should be as tight as possible against the cable / pipe to avoid extra work later with insulation.

STEP 1,2



- Insert the cable / pipe through the sleeve.
- Fill cavities with Marine Blanket from both sides of the sleeve.

STEP 1,3



- Seal and fill around the cable with Marine Flex Sealant.
- Let the Marine Flex Sealant flow out on the cable / pipe.
- Smooth the surface of the Marine Flex Sealant using a sponge with soapy water or a piece of Marine Blanket.

FIRESEAL RETROFIT GUIDE, WHEN ADDING OR REMOVING CABLES OR PIPES

MARINE FLEX SYSTEM

REMOVING CABLE OR PIPE

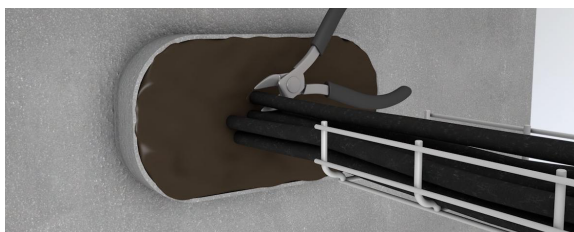


REVIEWED
Details of this review
are as indicated in the
ABS letter



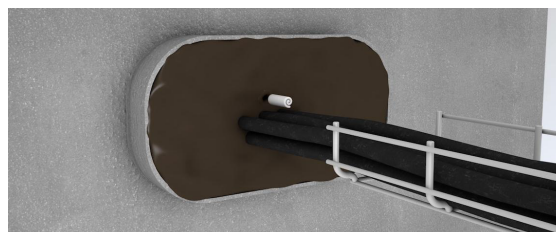
ABS Certificate 21-2081763-1-PDA
Issue Date: 10 February 2022
Expiry Date: 11 March 2026

STEP 2,0



- Cut the cable / pipe off and cut it loose from the Marine Flex Sealant
- Pull out the cable / pipe from sleeve

STEP 2,1



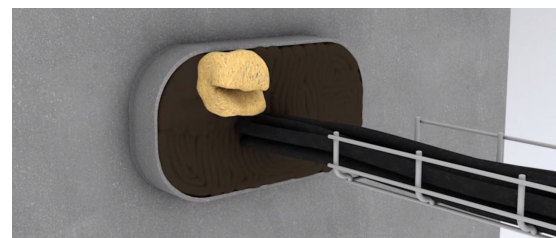
- Fill the entire hole with Marine Blanket. In some cases, it can be easier to fill from both sides
- Use a wooden stick or similar to push in the Marine Blanket

STEP 2,2



- Fill the surface of the hole with approx. 15mm thickness of Marine Flex Sealant.
- Apply in the same way from both sides of the penetration.

STEP 2,3



- Smooth out the surface of the Marine Flex Sealant using a sponge with soapy water or a piece of Marine Blanket.

Verification method of tightness [FS-QP2010-04]:

Application	Method
Non watertight installation	Visual examination [FS-QP2010-04]
Watertight installation	Leak test [FS-QP2010-04]

FireSeal Sweden
FireSeal AB
Box 7091
SE-164 07 Kista
Sweden

FireSeal North and South America
FireSeal Inc.
1200 Brickell Ave. Suite 800
Miami, FL 33131
United States