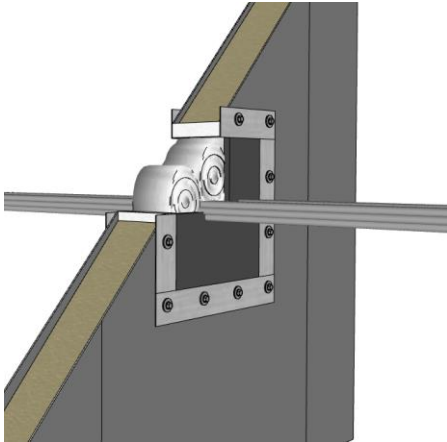


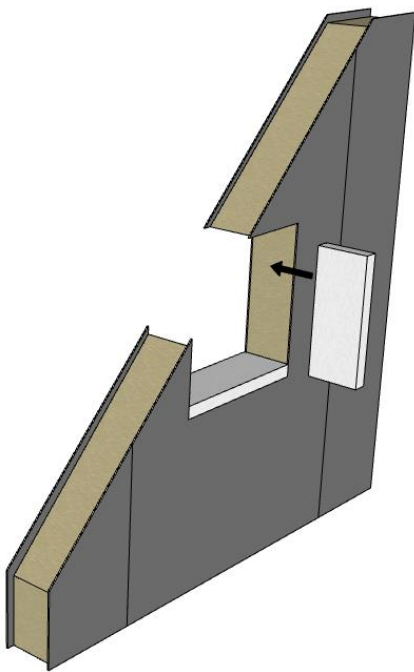
This is a step-by-step installation guide developed to ensure that installations of Marine Flex System are carried out correctly in sandwich panel. For detailed information, see associated product installation drawings.



Technical Data

Fire rating	A0-A60 class
Sandwich panel	Min. 100 mm thickness
Opening sizes	100x50 up to 600x400 mm
Cable load area	Max. 2400 cm ²
Cable bundles	Max. Ø150 mm

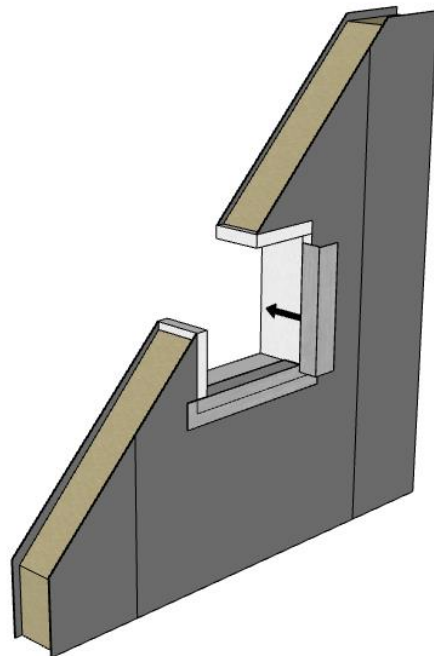
STEP 1



Prepare the cut out in the sandwich panel.

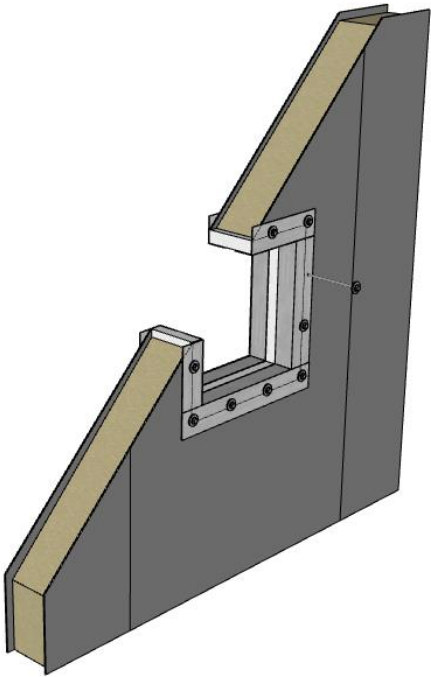
Keep in mind that the cut out shall be 50 mm larger than the expected opening dimension. This due to a strip of Marine Blanket (width: same as wall thickness, thickness:25 mm) is places in the opening. As shown in the picture.

STEP 2



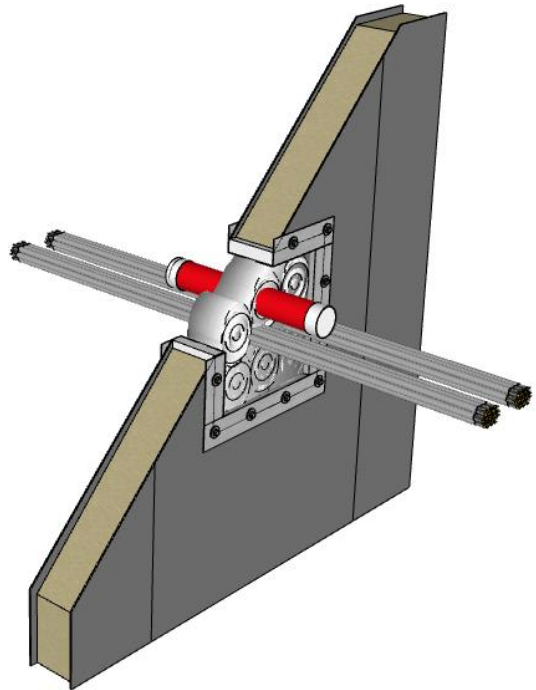
Cut the L-profile to fit the cut-out. Place the L-profile of stainless-steel min. 40x40x1,5 mm, on each side of the sandwich panel opening.

STEP 3



The L-profile is fixed with self-drilling screws 5,5x135 from one side so the L-profile is secured from both sides.

STEP 4



Marine Blanket is cut into suitable stripes. The width of the Marine Blanket stripes should be 24 mm less than the wall thickness.

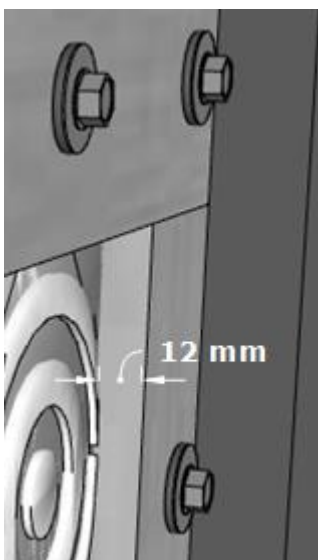
(Example, if the wall thickness is 100 mm, the Marine Blanket width shall be 76 mm.)

- Roll the Marine Blanket and fill the space between the cable and the L-profile in the wall. The Marine Blanket rolls shall be firm and well packed.
- All cavities shall be filled with pieces of Marine Blanket.

Installation aid (optional to install):

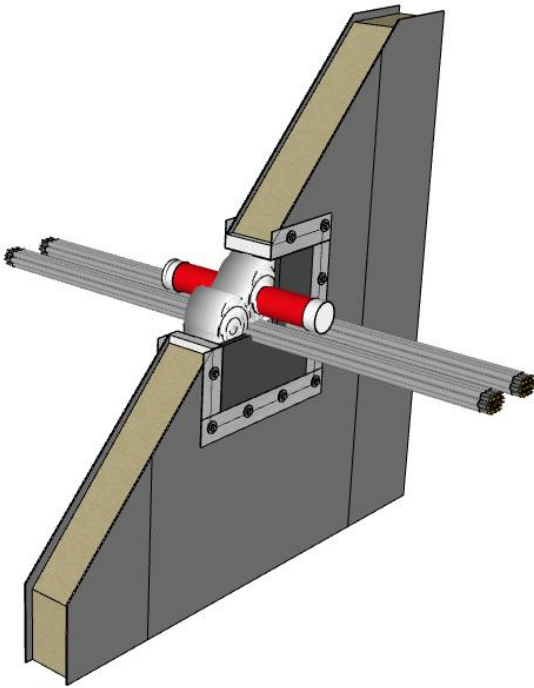
Intumescent sleeve (red tube), can be installed (caped from both sides with supplied lids). For an easier way to add new cables for coming retrofit.

STEP 5



Make sure Marine Blanket leaves a 12 mm gap to the edge of the L-profile.

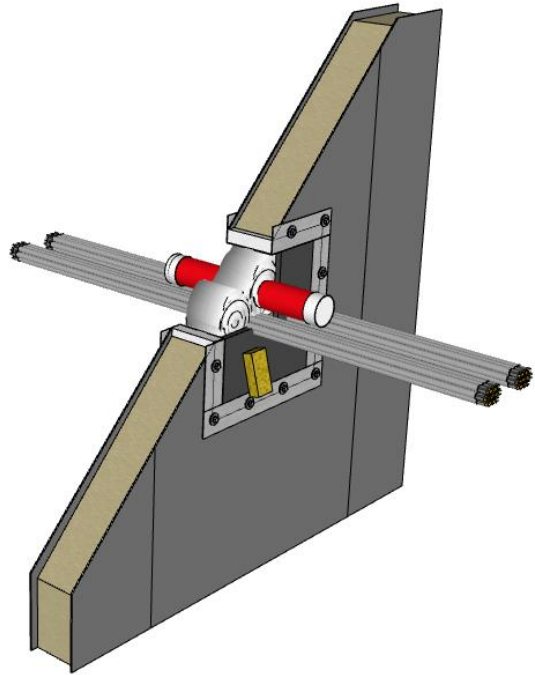
STEP 6



When the Marine Blanket is installed in the wall transit, it's time to start applying the Marine Flex Sealant.

- The Marine Flex Sealant shall not be of less than 12 mm thickness on both side of the transit, thicker layers are acceptable, but not necessary.
- It's important to get good adhesion to L-profile edge and cables. It is acceptable for the Marine Flex Sealant to be applied so that it follows the cables as they exit the transit and/or exceeds 12 mm thickness anywhere throughout the layer of sealant.

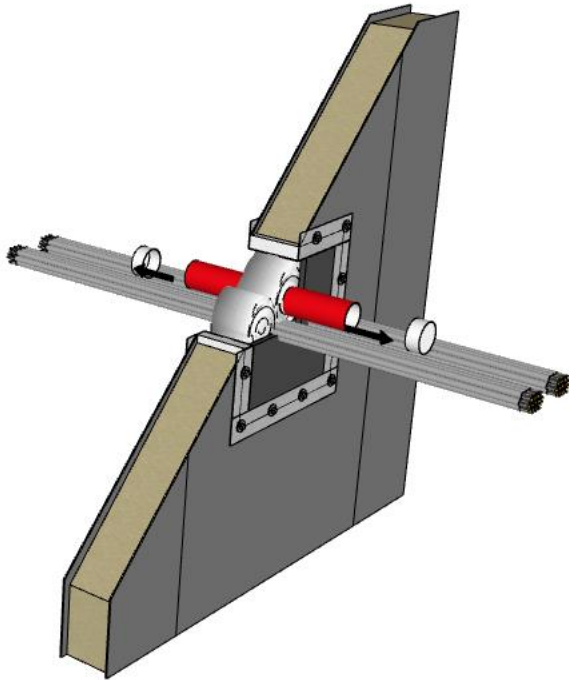
STEP 7



Smooth out the Marine Flex Sealant surface with a scraper.

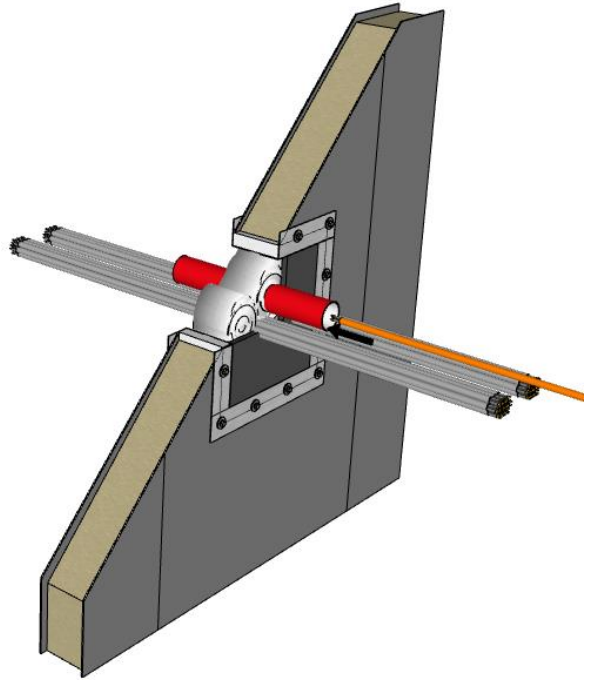
- Finish by smoothening out the Marine Flex Sealant on the surface with a sponge moistened in soapy water.
- Alternatively, the surface can be smoothed with a piece of Blanket pressed towards the Marine Flex Sealant.
- Finally, visually inspect the installation to ensure there are no gaps.

RETROFIT - STEP 1



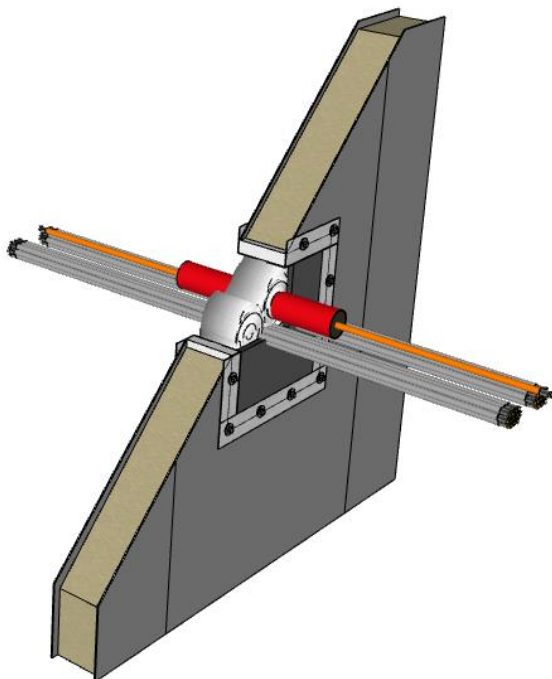
Remove the lids on the **Intumescent sleeve** (red tube).

RETROFIT - STEP 2



Insert the new cable/cables.

RETROFIT - STEP 3



Seal one side of the **Intumescent sleeve** with **Marine Flex** (min. 7 mm thick) for a gastight installation.